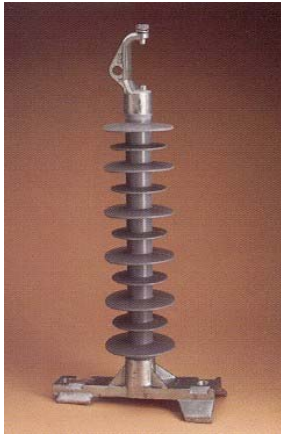


MACLEAN LINE HARDWARE



SILICONE RUBBER INSULATORS

Available for distribution and transmission voltages, MacLean Silicone Rubber "Compositz" Insulators are set apart from ceramic, glass and other polymer insulators because they utilise MacLean's field proven silicone rubber formulation. A superior insulating material silicone rubber has continually proven its ability to withstand the toughest environmental applications and the test of time. All suspension / tension insulators are made using electrical grade, corrosion resistant fibreglass produced by MacLean Power Systems. This material combined with a unique triple sealing process ensures the mechanical reliability over the lifetime of the installation.



We offer Insulators for tension and suspension applications on Over-head Lines and Sub-Station Post Insulators. Strong and lightweight, "Compositz" Insulators are available with a range of end fittings.



AUTOMATIC CONNECTORS

Automatic Splices are the most labour efficient method for joining powerline conductors while providing a reliable mechanical connection. They provide a safe, secure, 100% electrical connection. Automatic Connectors are ideal for use for fast conductor repairs when storm emergencies down powerlines. A full range of Automatic Connectors is available for ACSR, Copper and all Aluminium conductor.



Also available is the StrandVise® and Wirevise® range of Automatic Deadends designed specifically for terminating Staywire.



LIVE LINE CLAMPS AND BAILS

Live Line Clamps and Bails can be installed easily from the ground or pole using Hot Sticks. Available in a range of sizes for both Copper and Aluminium conductors.



Tel: 01275 342700/Fax: 01275 349009
E-mail: enquiries@hor-i-zon.com